



LUBE-Master



Fluid Management System

Exceptional performance

The Lube-Master offers ease-of-use combined with the high performance you've come to expect from Eurolube products.

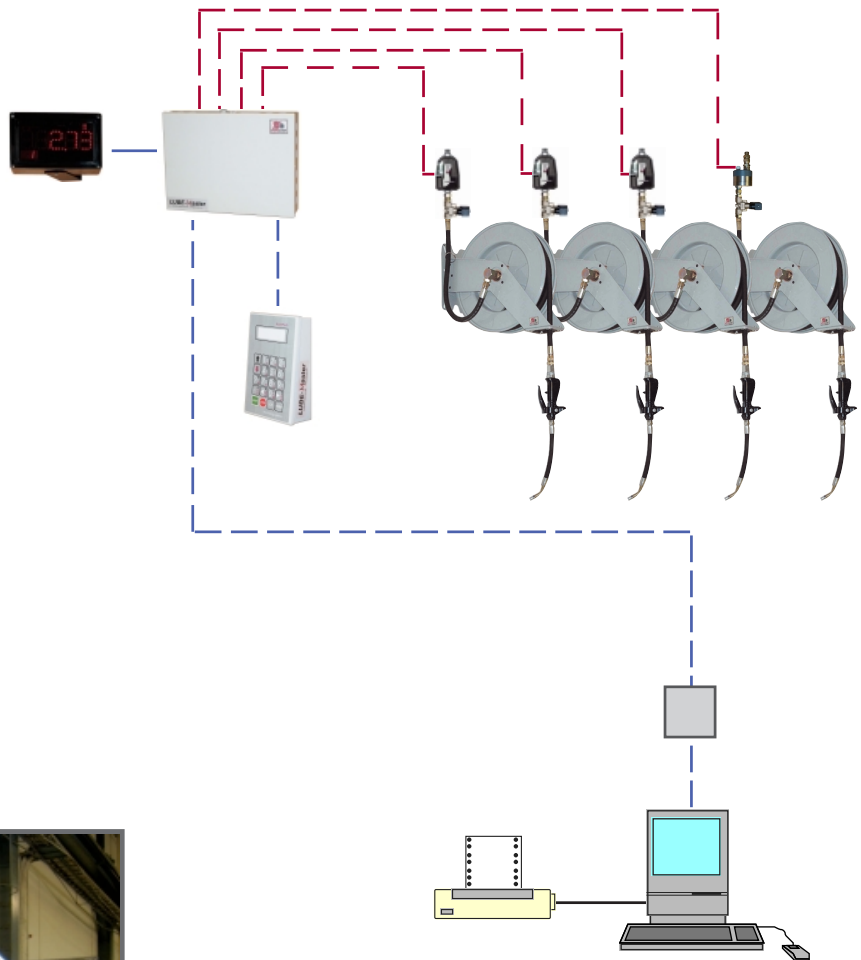
Easy ordering



Precise dispensing



Lube-Master system provides precise metering and dispensing of oils, coolants and wind screen fluids for automotive and Industrial applications.



Direct onto invoice



Easy to Integrate with other software packages



Eurolube Equipment AB

Box 36 SE-711 21 Lindesberg Sweden Phone +46 581 83665 Fax +46 581 40975 email: eurolube@eurolube.com website: www.eurolube.com



LUBE-Master System customisation

It's easy to meet your application needs with a custom-configured LUBE-Master system. Select from a variety of LUBE-Master modules and software settings.

The modular design facilitates easy integration into new or existing plants with features to integrate with other software packages.

Reel properties

ReelNo: OK Cancel

Group: A B C D
 E F G H

Mask: Validate user Use 2-signal meter
 Validate job number Use external user validation
 Require volume Use external job validation
 Use puls compensation Use external tank validation
 Use PortB as trigger Led counts down

Timeout:

PPU:

Min volume:

Max volume:

DB Address:

Led Address:

TankNo:

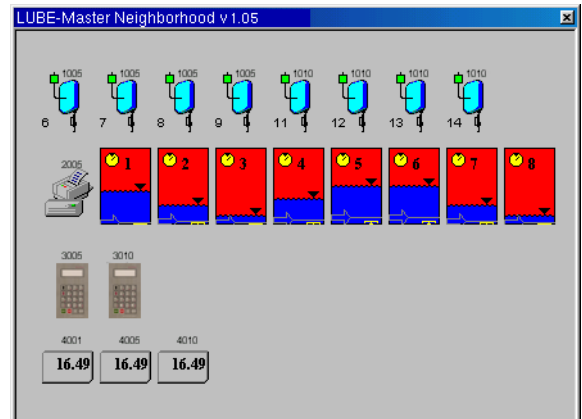
How it works

LUBE-Master is electronically-controlled by intelligent modular units. The system provides precise metering and dispensing of oils, anti freeze and wind screen fluids etc., for automotive and Industrial applications. The meter modules provide fast response to electronic commands and ensures precisely-controlled, preset dispensed volumes.

- ✓ Automatic assignment of correct quantity, based on vehicle make, model and year.
- ✓ Open flow dispensing
- ✓ Batch dispensing
- ✓ Simultaneous dispensing to all points
- ✓ Flow meter calibration
- ✓ Dispense anywhere from PC or any Keypad
- ✓ Timeout – terminates job automatically if no flow
- ✓ Database manager with reports
- ✓ Simple operator interface

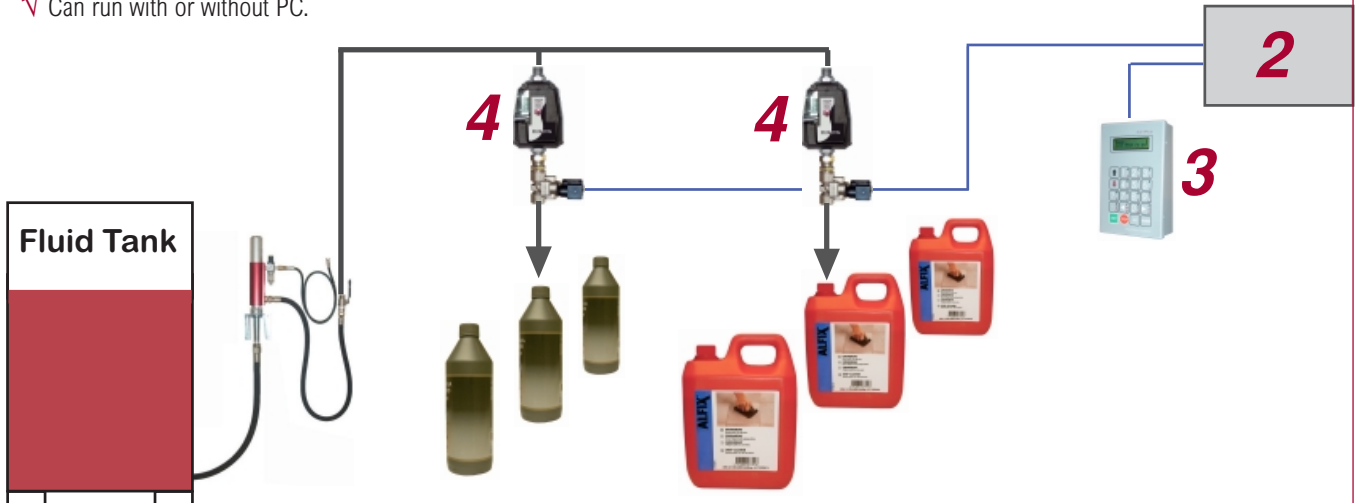
Advantages

- ✓ Ease-of-use
- ✓ Increased profitability
- ✓ Correct volume on demand
- ✓ Customised reports
- ✓ Software integration means automatic billing, optional.
- ✓ Compact size, easy mounting
- ✓ Precise dispensing



Industrial batch dispensing

- ✓ Interested in increasing productivity and improving quality, LUBE-Master is the solution.
- ✓ LUBE-Master offers a number of batch dispensing solutions, it's easy to design to meet specific demands.
- ✓ Up to 7 volumes can be pre-programmed and 4 volumes can be dispensed simultaneously.
- ✓ Can run with or without PC.



EuroLube Equipment AB

Box 36 SE-711 21 Lindsberg Sweden Phone +46 581 83665 Fax +46 581 40975 email: eurolube@eurolube.com website: www.eurolube.com



Part No: 53403

Software & Interface



1



- ✓ LUBE-Master runs under Windows 95/98/NT/XP/2000. LUBE-Master can run "in the background" and can be accessed from your remote Key pads.
- ✓ Simple operator Interface, includes powerful database manager.
- ✓ Easy to integrate with other software packages for automatic invoicing.
- ✓ Multilingual, 12 language available, easy setting.

Part No: 53400

Fluid Controller



2

- ✓ The Fluid Controller, control the amount of fluid ordered from any Key pad or PC in the entire system.
- ✓ One module controls up to 4 outlets. Over-ride bypass facility included.
- ✓ Every outlet port can be given unique functions as:
 - > pin code
 - > volume
 - > time out
 - > job number
 - > group access
 - > PPU
 - > display information
 - > min/max volume

Part No: 53401

Key pad



3

- ✓ The remote key pads are designed to be located at strategic places to allow remote entry of PIN id, job no, of fluid etc.
- ✓ A two line by 16 character, back-lit, LCD display is used to convey clear and concise messages to the operator.
- ✓ Minimum ONE Key pad required to operate a system, no limit for number of Key pads in the system.
- ✓ Any outlet can be opened from any Key pad.
- ✓ Optional: Barcode or card reader can be connected.

Oil Part no: 1168465
Fluid Part no: 1168466

Meter modules Oil & fluids



4

- ✓ LUBE-Master high precision meter modules with pulse output 328 PPU, solenoid valve included.
- ✓ The oil meter can also be used for anti freeze.
- ✓ Accuracy +/- 0,5%, easy to calibrate.
- ✓ The fluid meter is made of Stainless Steel, ideal for wind screen fluid and similar fluid.

DATA:	Part No.	Min.-Max flow	Max. pressure	Connection	Module
	1168465	1-20 litre/min.	5 MPa (50bar)	In 1/2" (M) out 1/2" (F)	Oil
	1168466	1-35 litre/min.	7 Mpa (70bar)	In/out 1/2" (F)	Fluids

Part no: 53402

Printer module



5

- ✓ Lube-Master can run without PC, this configuration require the Printer module to have printouts of all transactions. To keep tack of date and time, a clock module must be mounted in the Printer module in this configuration
- ✓ As an extra feature if PC is used, the Printer module can be installed anywhere in a workshop for additional printouts.

Part no: 53408

Tank module



6

- ✓ The Tank module is used to control pumps, automatic start and stop. No pressure in the pipe work in the stand by mode.
- ✓ Real time measure of levels in tanks in addition with the Lube-Master level sensors.
- ✓ The Tank module can only be used in the PC based version.



Part no: 53404

Large Display



7

- ✓ Clearly visible at long distance, useful for large volumes.
- ✓ The display can also be used as a simple "stand-alone" dispense unit in the PC based version.
- ✓ The active outlet is shown in the lower left corner.



LUBE-Master system features

Number of outlets	Up to 255	Maximum distance 2000m
Number of fluids	unlimited	PC connection required.
Number of Key pads	unlimited	Minimum one Key pad required.
Number of PIN codes	unlimited	PC connection required.
Job number validation	unlimited	PC connection required.
Integrate to other softwares	Yes	Optional, contact us for further information.
Simultaneous Key pad operation	Yes	Any outlet can be opened from any Key pad.
Simultaneous dispensing	Yes	Simultaneous use at all dispense points.
Tank stock control	Yes	Automatic tank control, low level warning.
PIN code security	Yes	Prevent unauthorised dispensing.
Preset volume	Yes	Frequent volumes can be pre-programed.
Hose Reel ID	Yes	3 numbers
Operator ID (PIN code)	Yes	4 digits
Job number	Yes	16 digits
Transactions number	Yes	Running
Type of fluids	Yes	Any Part No and name of fluid can be given.
Multilingual	Yes	Choose between 12 built-in languages.

REPORTS

LUBE-Master runs on Microsoft® Access database, with use of Access or Excel is it possible to design your own reports. LUBE-Master includes a database manager with following standard reports:

1) All transactions listed

2) Setting your system eg.

- > add or delete user
- > add or delete job no.
- > add or delete tanks
- > handling printouts

3) Total use

- > per job number
- > per user
- > per fluid
- > tank status

4) Date and time of use

- > per user
- > per fluid
- > per job

SYSTEM COMPONENTS

Part No.	Item name	Function
53403	PC Software & Interface	One per system, the Interface is the communications link between the PC and the Fluid Controller/s. Input 24V DC.
53400	Fluid Controller.....	Controls up to 4 outlets, input 230V AC. Output 24V DC. Max current 100mA for electronics and 1A for each solenoid valve.
1168465	Meter module-OIL	One per dispensing point OIL / Antifreeze required.
1168466	Meter module-Multifluid.....	One per dispensing point Wind screen required.
53401	Key pad.....	Remote Key pad located at strategic points, input 24V DC.
53411	Communications cabel	4 core sheilded x 0,23mm. ²
53393	Signal cable	4 core x 0,5mm. ²

OPTIONAL

9999	Software Integration	For communication with other systems (ex. Tacdis, Dracar etc.)
53402	Printer module	Accessories for receipt printouts at strategic points.
53408	Tank module	For control of pumps, automatic start and stop.
53354	Receipt printer	40 column receipt printer.
53404	LED-Display	Large display with 40mm digits, includes "reel open indication"

Eurolube Equipment AB